

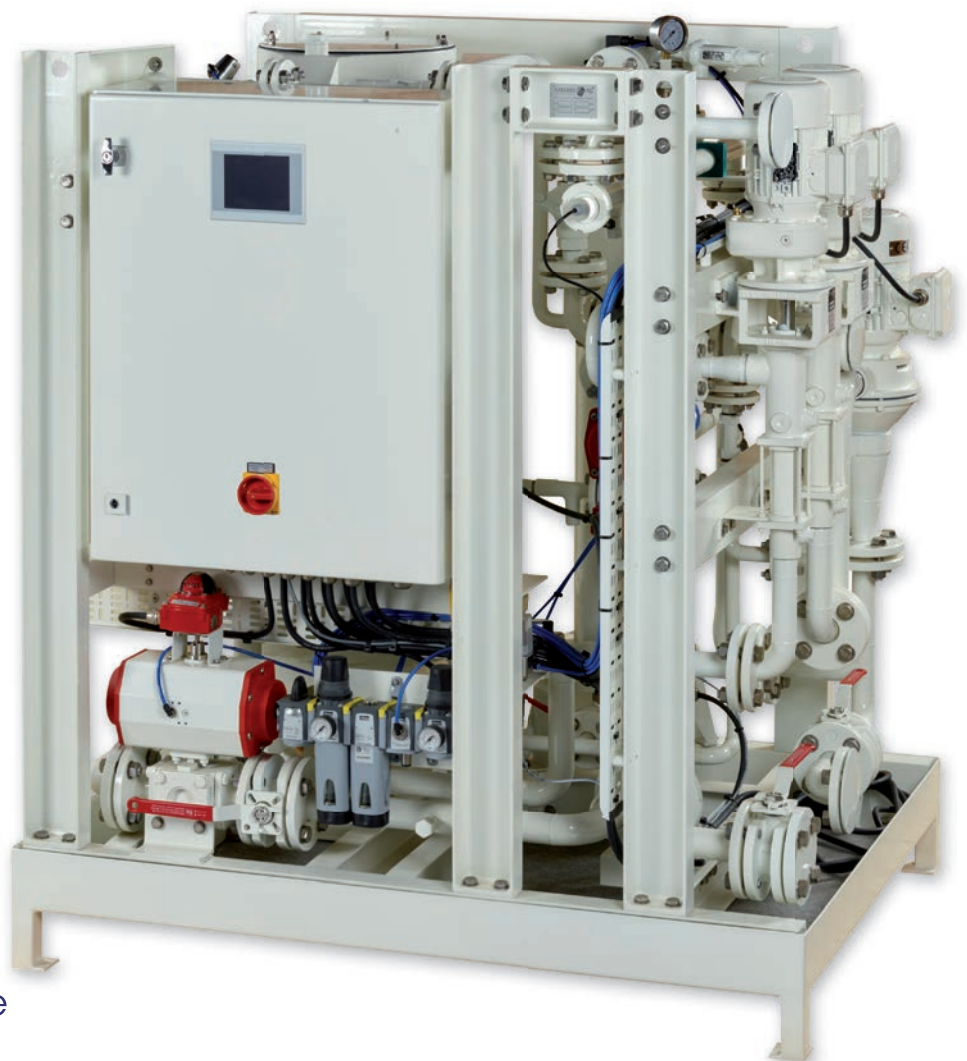
HAMANN AG

High Quality Sewage Treatment Plants

certified according to
MEPC.227(64)

HL-CONT Plus

- ▶ Compact and light in weight
- ▶ Neither membranes nor filters
- ▶ Modular design
- ▶ Made in Germany
- ▶ Proven technology
- ▶ Hardly any maintenance
- ▶ Clean hands for operators
- ▶ Also available in NAVY execution



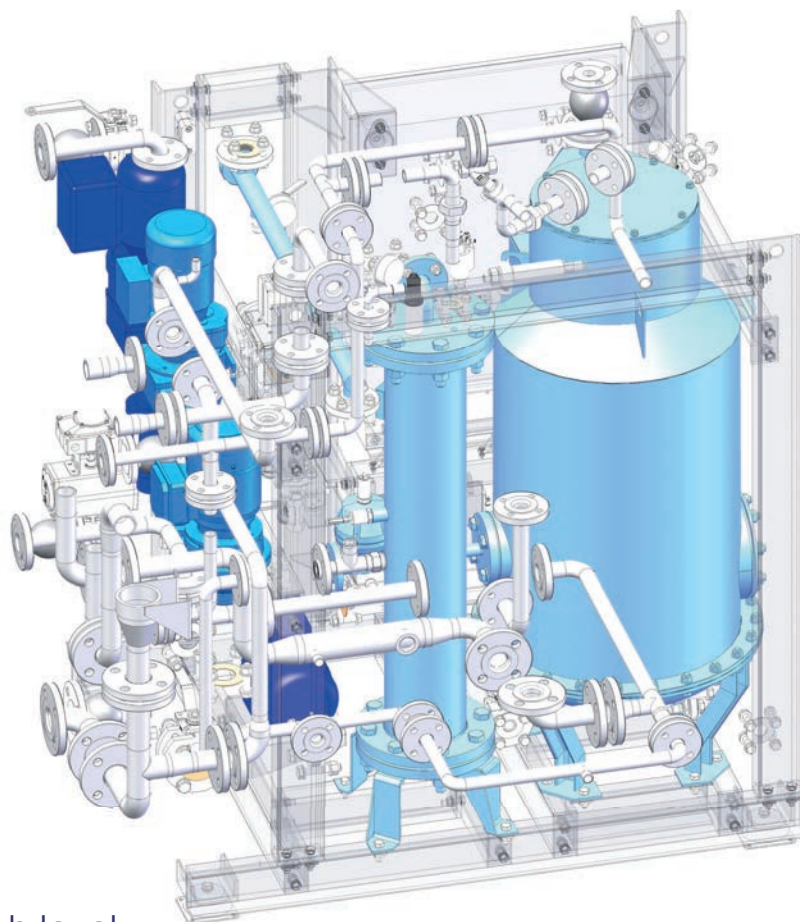
Supported by:



on the basis of a decision
by the German Bundestag

The process / technical description of the **HL-CONT Plus** is based on physical treatment.

- ▶ Maceration of sewage
- ▶ Dissolved air flotation for the reduction of TSS, BOD and COD
- ▶ UV disinfection



All sewage needs to be collected in one ship's holding tank. Depending on the calculated load and number of persons the tank must have a sufficient size as the working volume between high level and stop plant is one important issue for the **HL-CONT Plus**.

HL-CONT	Capacity [litre/day]	Persons onboard calculated with 135 l / day	Persons onboard calculated with 180 l / day	Size WxLxH [m]	Empty Weight [kg]	Electrical Consumption	Vent Connection
0125	3.000	22	16	0.8 x 0.9 x 0.9	165	2.1 kW	1/2"
025	6.000	44	33	0.9 x 1.2 x 0.9	315	2.3 kW	1"
05	12.000	88	66	1.0 x 1.3 x 1.4	680	2.6 kW	1"
10	24.000	177	133	1.2 x 1.6 x 1.8	820	3.5 kW	1"
20	48.000	355	266	1.6 x 2.1 x 2.1	1450	5.2 kW	1"
40	96.000	711	533	2.3 x 2.5 x 2.3	1900	8.5 kW	1"
80	192.000	1422	1066	2.1 x 4.7 x 2.7	4700	15.0 kW	2"

www.HAMANNAG.com

HAMANN  **AG**

Bei der Lehmkuhle 4
D-21279 Hollenstedt / Germany
Phone: +49 / 4165 / 22 11- 0
Fax: +49 / 4165 / 22 11 25
E-mail: sales@hamannag.com